



Monash University – ACER  
CENTRE FOR THE ECONOMICS OF EDUCATION AND TRAINING

# How young people are faring in study and work across Australia

**Michael Long**

AVETRA Annual Conference 2007

11-13 April 2007  
Victoria University  
Melbourne, Victoria

Draws on:

How young people are faring

<http://www.dsf.org.au/papers/192.htm>

Setting the Pace

<http://www.dsf.org.au/papers/174.htm>



# Overview

## The Demographics

### Full-time engagement in study and work

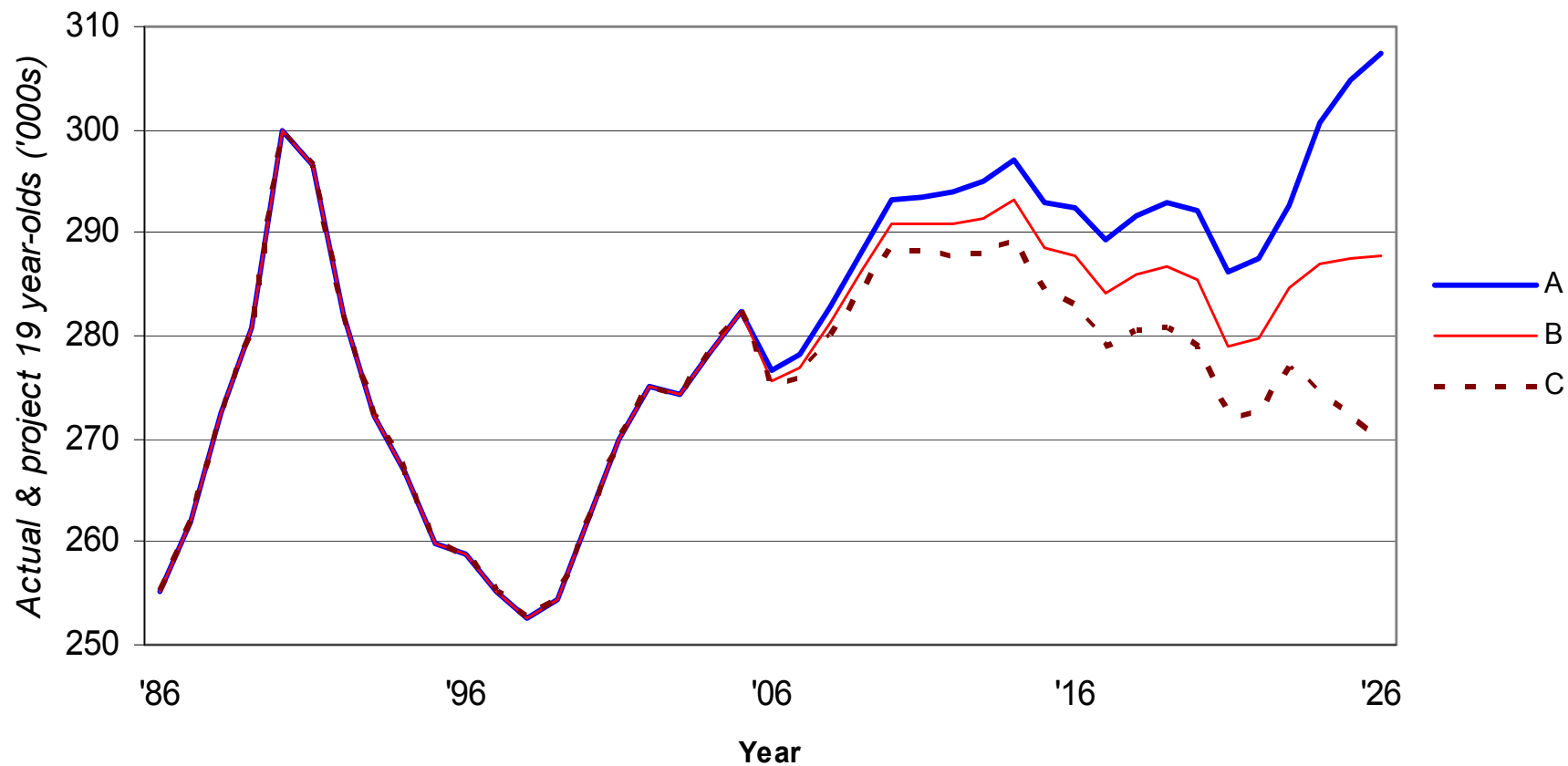
- **15-19 year-olds**
- **School leavers**
- **Under-employment**

### Policy and program responses

- **The programs**
- **A new metric for infrastructure expenditure**



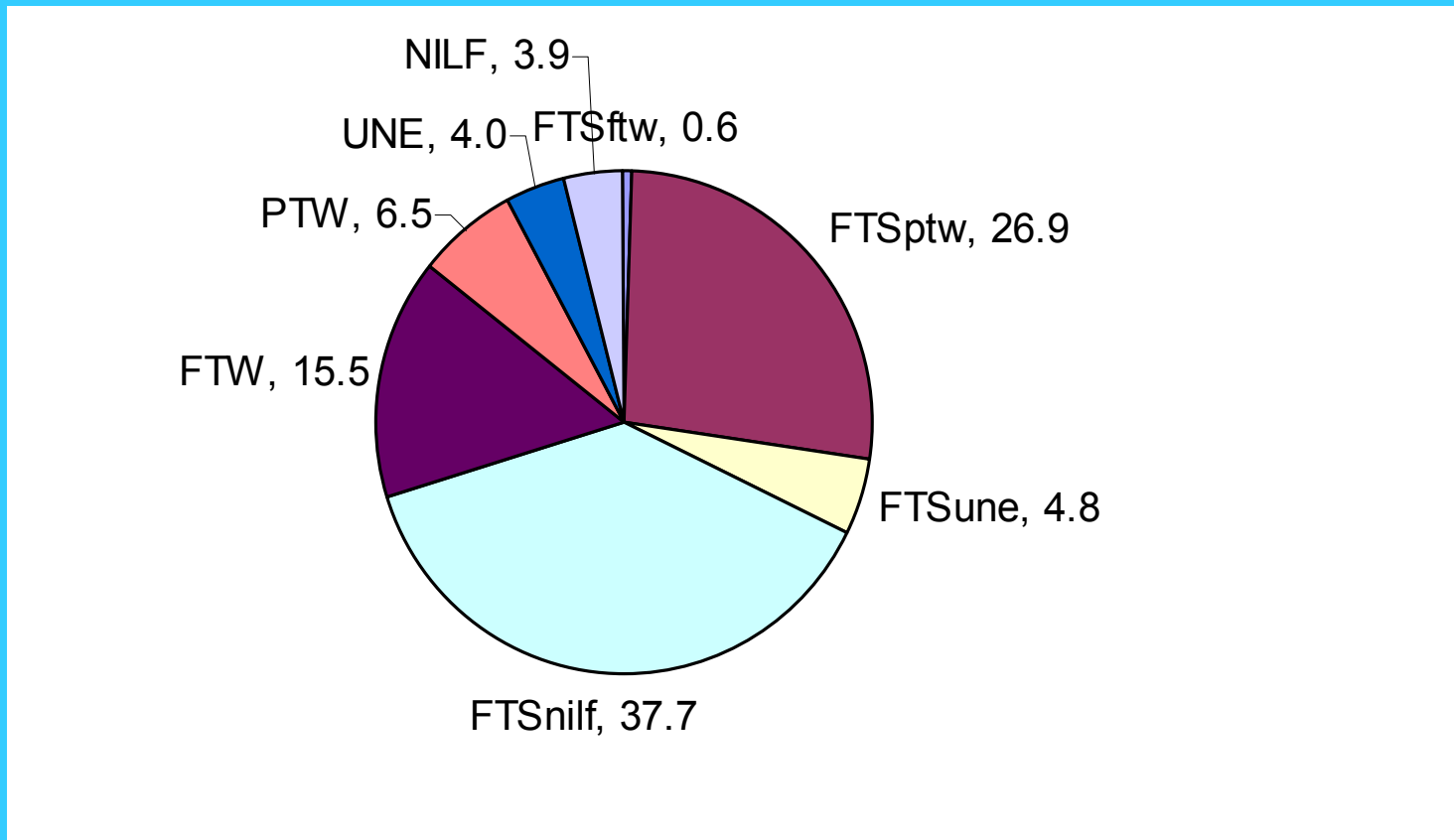
# We are not running out of young people



ABS, *Estimated resident population by single year of age, Australia, Table 9, 3201.0*;  
and ABS, *Population projections by age and sex, Australia, Table A9, 3222.0*.



# Participation in study & work by 15-19 yo's

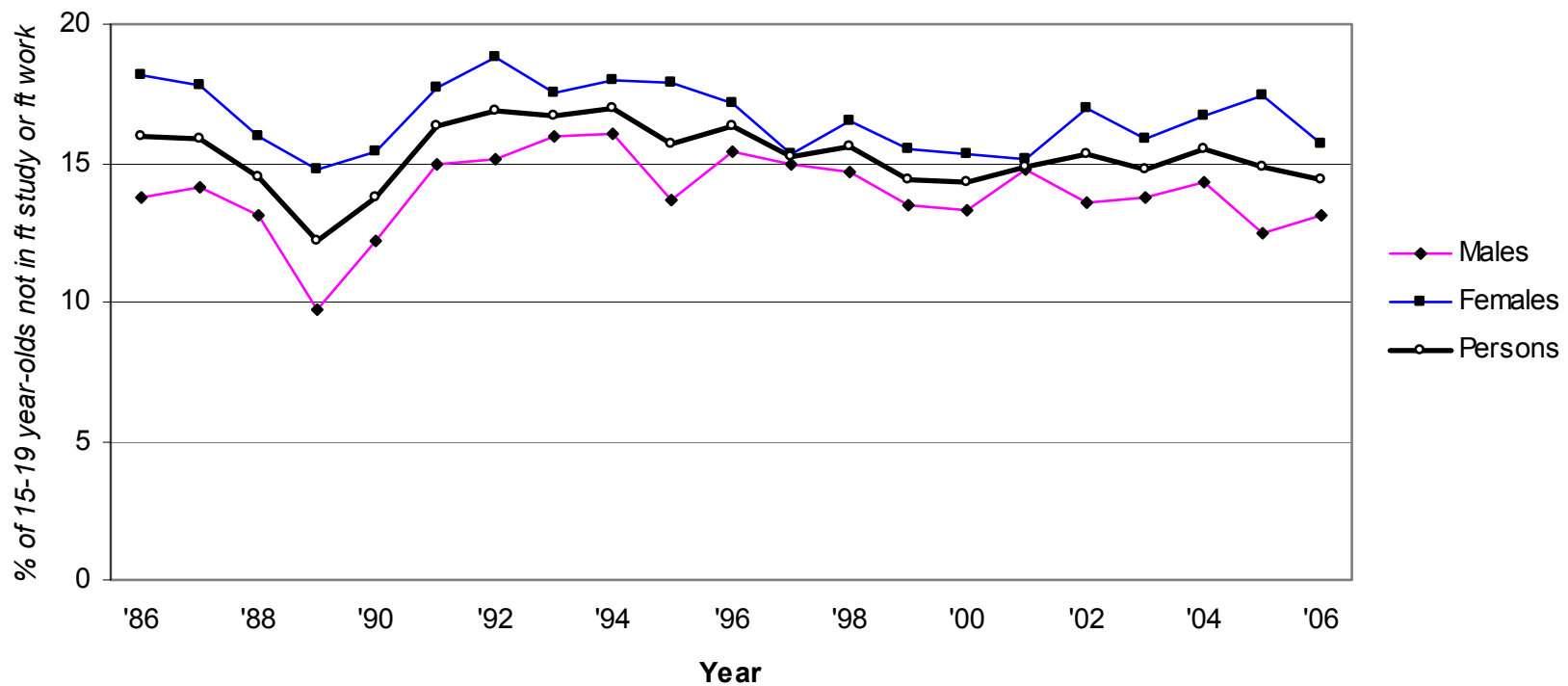


**The HYPAF constant:** - 14.4% (202,200 ) of 15 to 19 year-olds not in full-time education or full-time work, May 2006

ABS, *Labour force Australia*



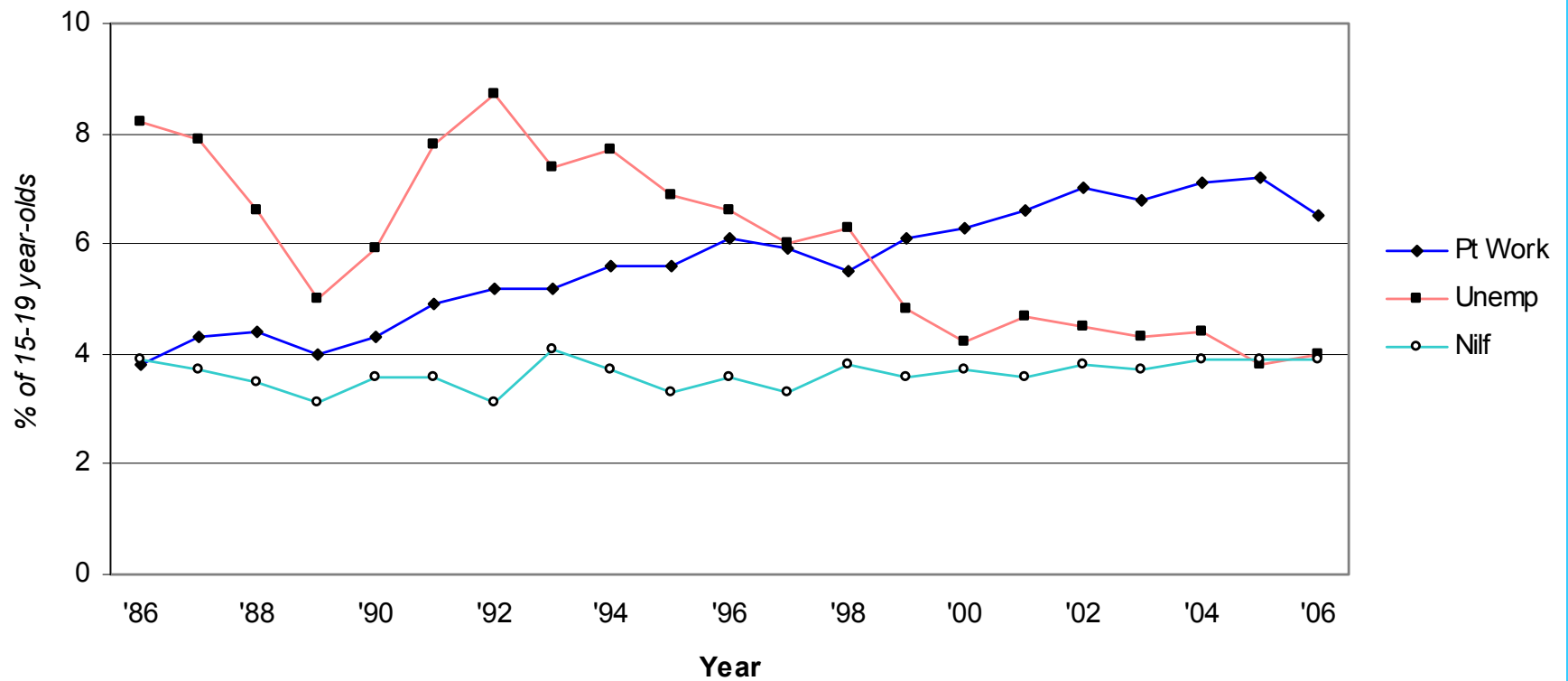
# Not in full-time study or work 15-19 year-olds



*ABS, Labour force Australia*



# Part-time work, Unemployment & NILFers 15-19 year-olds not in full-time study



*ABS, Labour force Australia*



# Under-employment of 15 to 19 year-olds

## **Not in full-time study**

6.6% working part-time

66.3% want more hours of work

4.0% unemployed

88% want a full-time job

3.9% not in the labour force

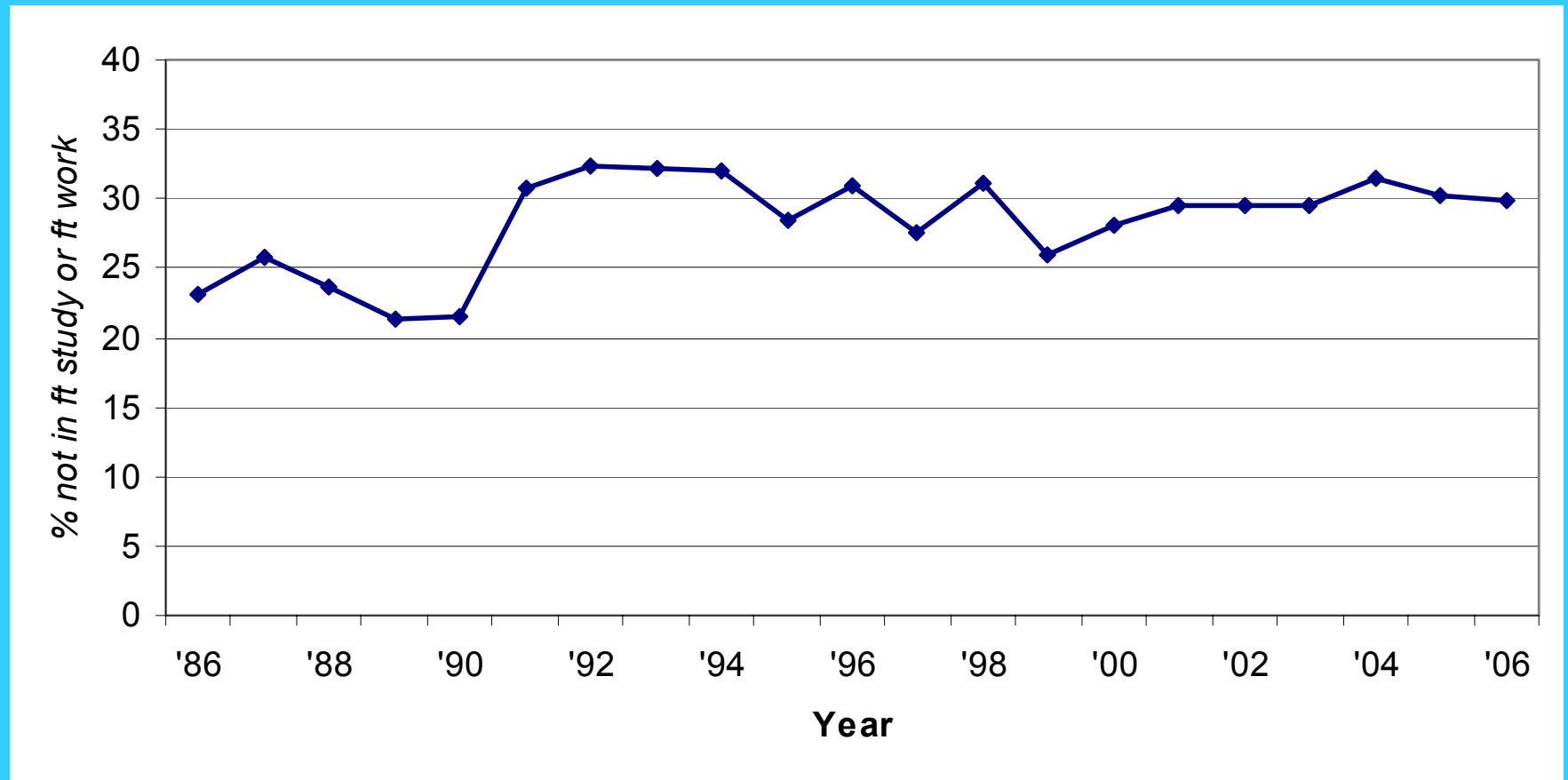
46% marginally attached (“almost unemployed”)



## Not in full-time study or work

- Nearly a quarter of 18 and 19 year-olds are not fully engaged in learning or work.
- Nearly a third of school leavers are not fully engaged in learning or work six months after leaving school.
- Nearly a quarter of 20 to 24 year-olds are not fully engaged in learning or work.

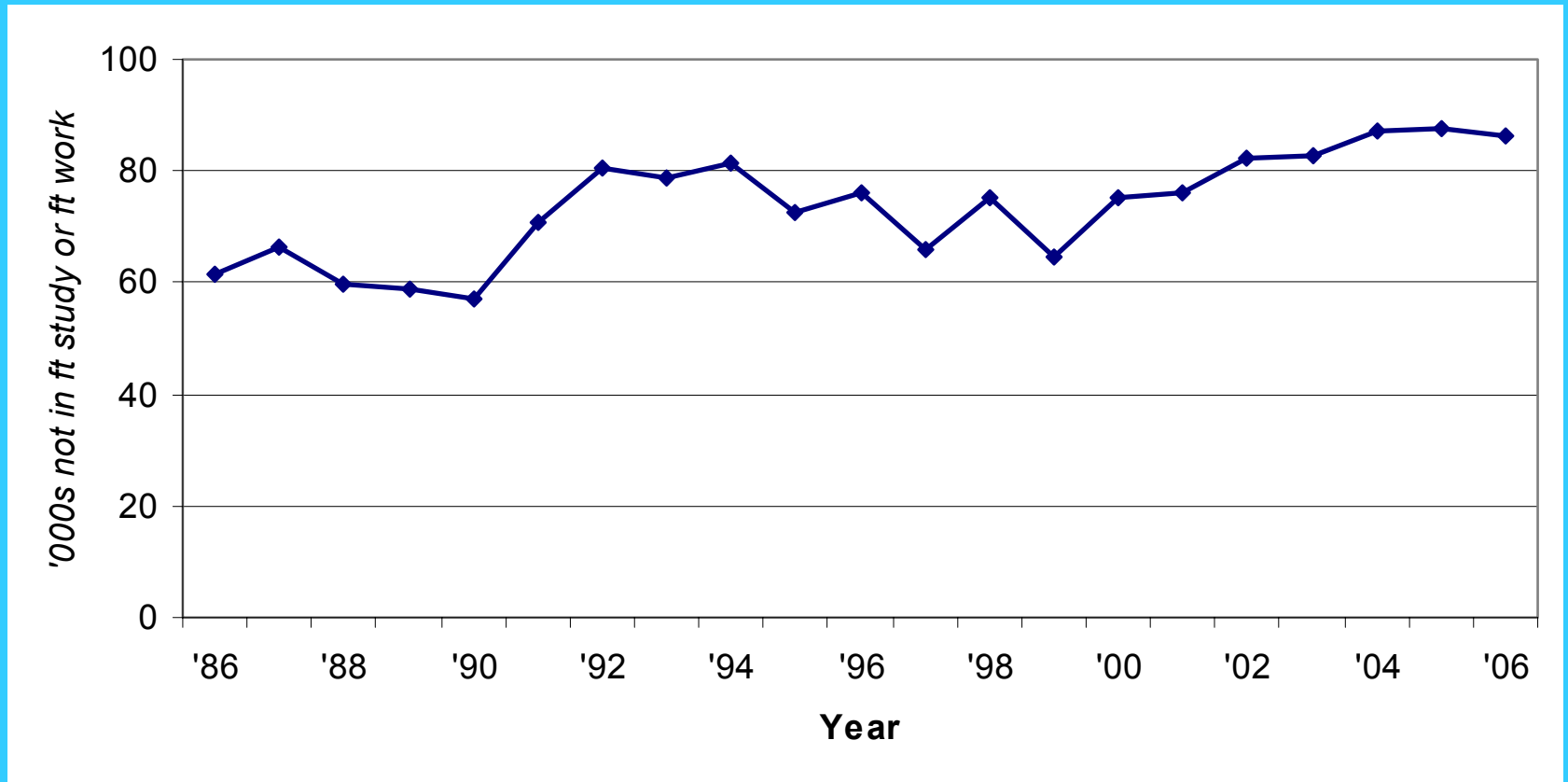
# School leavers not in full-time study or work %



ABS, *Labour force Australia*

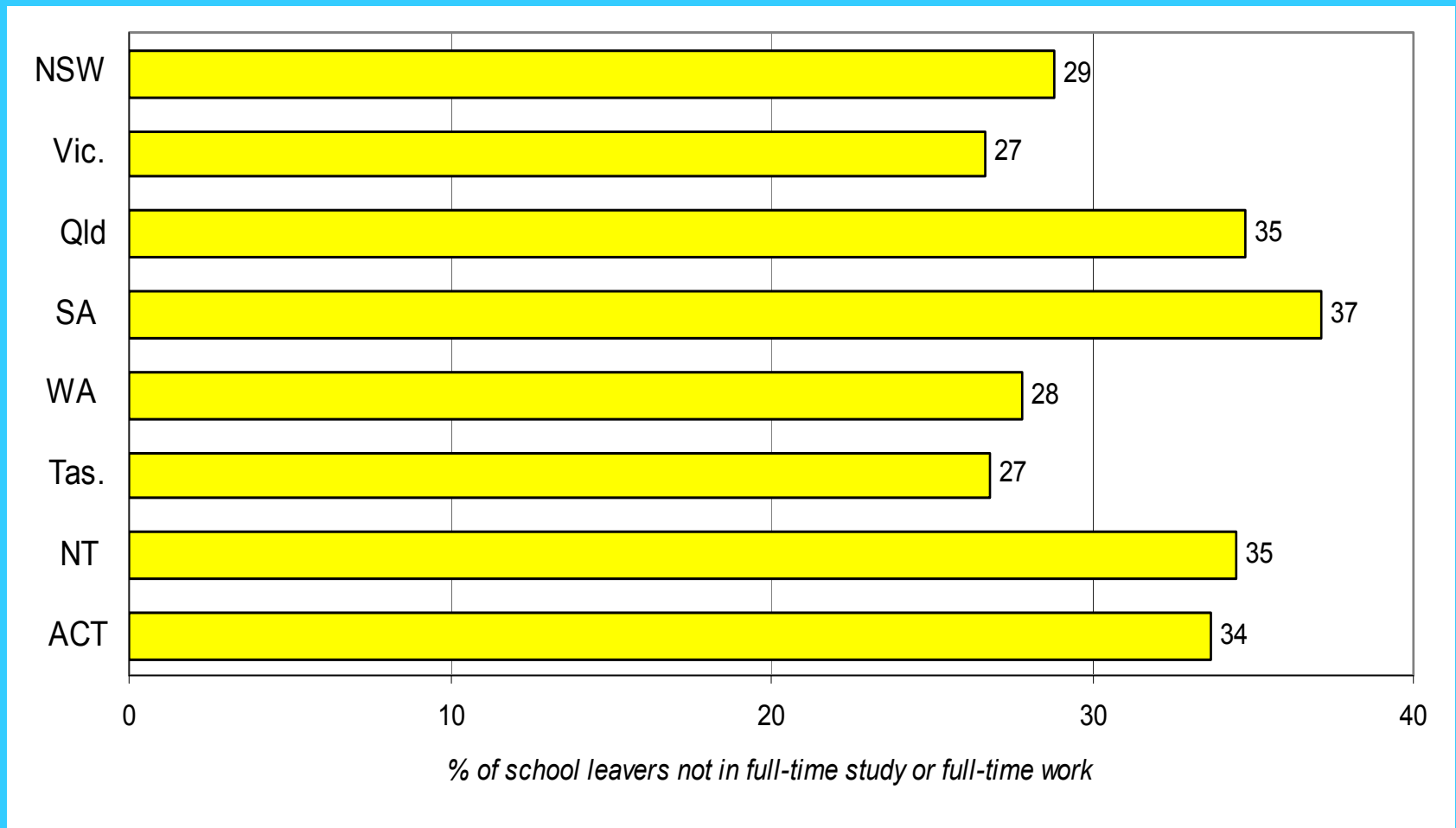


# School leavers not in full-time study/work '000s



ABS, *Labour force Australia.*

# School leavers not in full-time study or work



ABS, *Labour force Australia.*



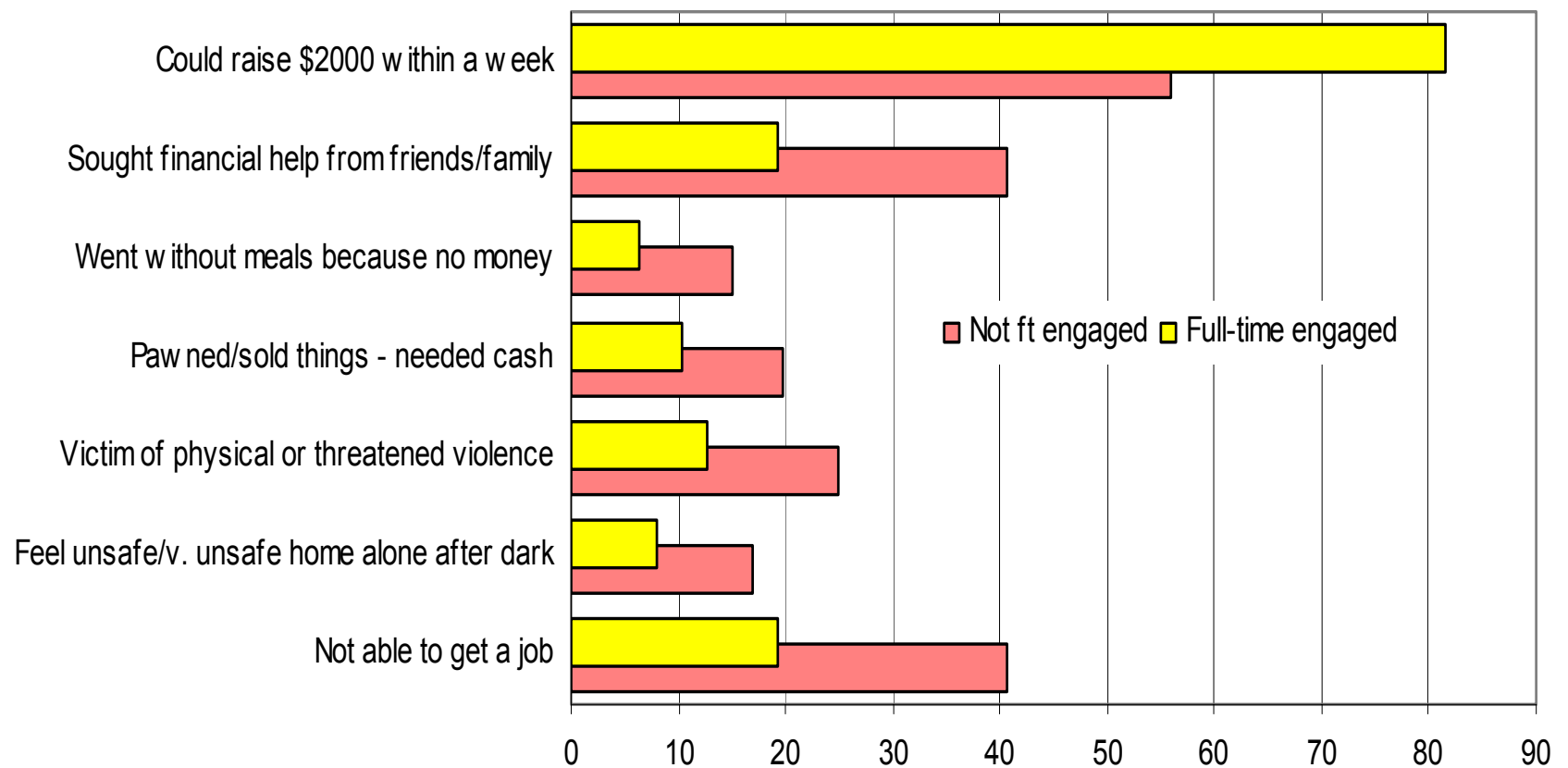
# Young people not in full-time education or work, May 2004

## 15-19 year-olds not at school by highest year of schooling completed

Year 12	20%
Year 11	40%
Year 10	39%
Year 9	59%

*ABS, Education and work*

# The personal dimension: 18-24 yo's



# Policy responses

## **Three responses to skills/labour shortages:**

- Transfer production overseas (not to be confused with the transfer of production overseas to obtain lower cost labour, probably the main reason for transferring production so far).
- Move overseas skilled (and more recently semi-skilled) workers to Australia.
- Improve and expand employment and training for young Australians, among others.

## Policy developments

- Reviews of youth transition performance (Kirby)
- Reviews of senior certificates (VCAL)
- Changes to the minimum school leaving age
- New benchmarks, goals and legislation (2010 targets)
- Education & training guarantees
- Individual managed support (MIPs)
- Careers planning (MIPs, OnTrack Connect))
- Student tracking and monitoring (OnTrack)
- VET initiatives
- Youth employment initiatives
- Community partnerships (LLENs)
- **Increased funding (\$132m)**



# A metric for infrastructure expenditure: The Eastlink Tollway

## Features

- March 2005 to late 2008
- 45 kilometres (including 1.5 kms of tunnel)
- \$2.4 billion to construct
- \$53.3m per kilometre (inc 33.3 m of tunnel) pa
- Excluding rent

## Expenditure on recent youth transition initiatives

Government	Vic.	Qld	SA	WA	Tas.	Aust
Extra exp \$m	132	135	28	182	21	1,119
Years	3	1	3	5	4	3
Per year \$m	44.0	135.0	9.3	36.4	5.3	373.0
Kms per year	0.8	2.5	0.2	0.7	0.1	7.0
Vic popn	<b>0.8</b>	<b>3.2</b>	<b>0.6</b>	<b>1.6</b>	<b>1.1</b>	<b>1.7</b>

## Further information

- at [www.dsf.org.au](http://www.dsf.org.au)
  - Local Investment, National Returns
  - Economic Benefit of Increased Participation in Education & Training
  - Setting the Pace
  - Reviewing the Reviews
  - Hitting the Wall
  - How Young People are Faring 2006
- And at:  
[www.education.monash.edu.au/centres/ceet](http://www.education.monash.edu.au/centres/ceet)

